

# Corporate Structure

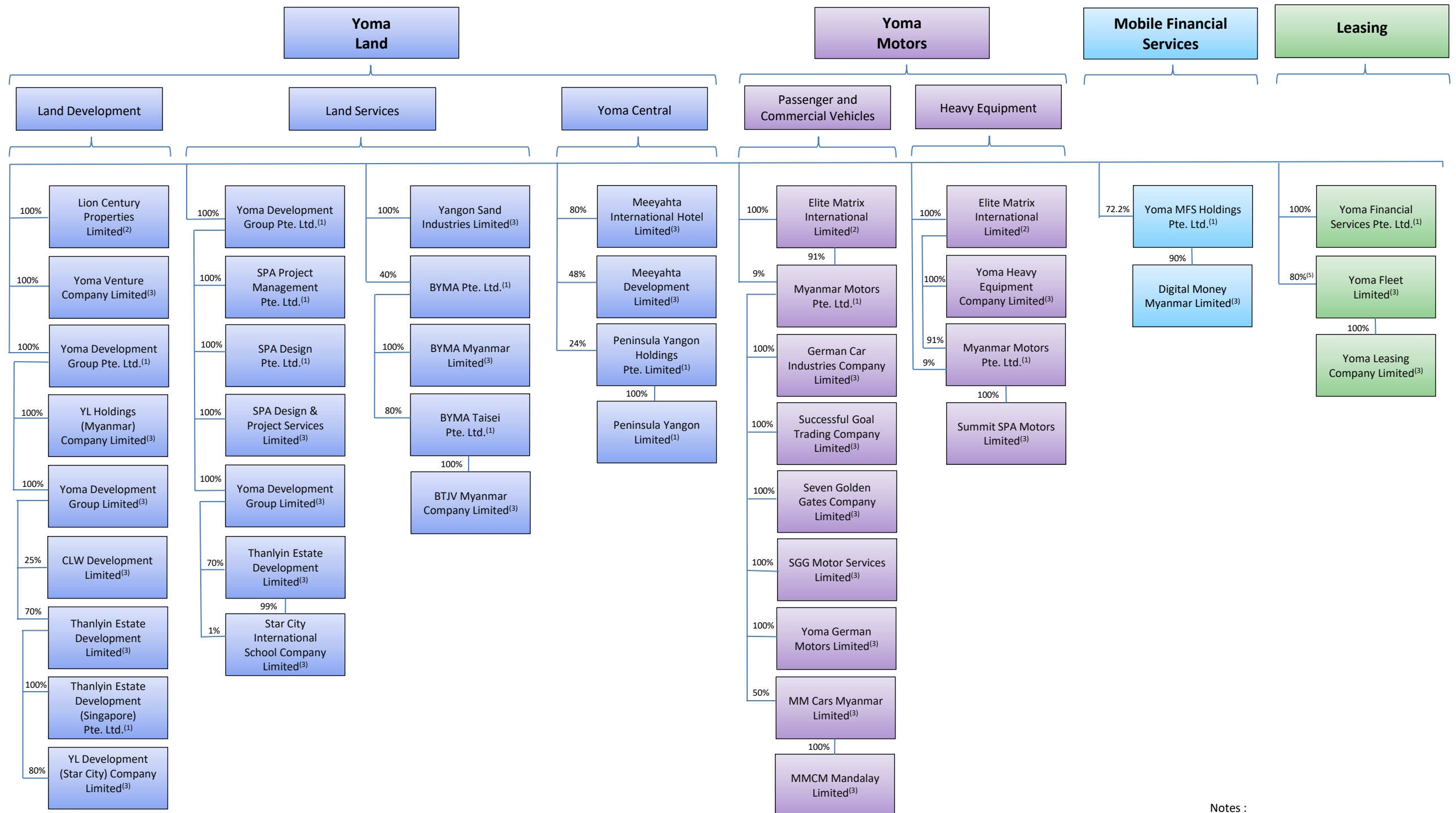
(As at 27 December 2023)



## Yoma Strategic Holdings Ltd.<sup>(1)</sup>

100%

### Yoma Strategic Investments Ltd.<sup>(1)</sup>



Notes :

- (1) Incorporated in Singapore
- (2) Incorporated in British Virgin Islands
- (3) Incorporated in Myanmar
- (4) Incorporated in People's Republic of China
- (5) 100% held through Myanmar Motors Pte. Ltd., a wholly-owned subsidiary of Yoma Strategic Investments Ltd.
- (6) Incorporated in Philippines
- (7) Incorporated in Thailand

# Corporate Structure

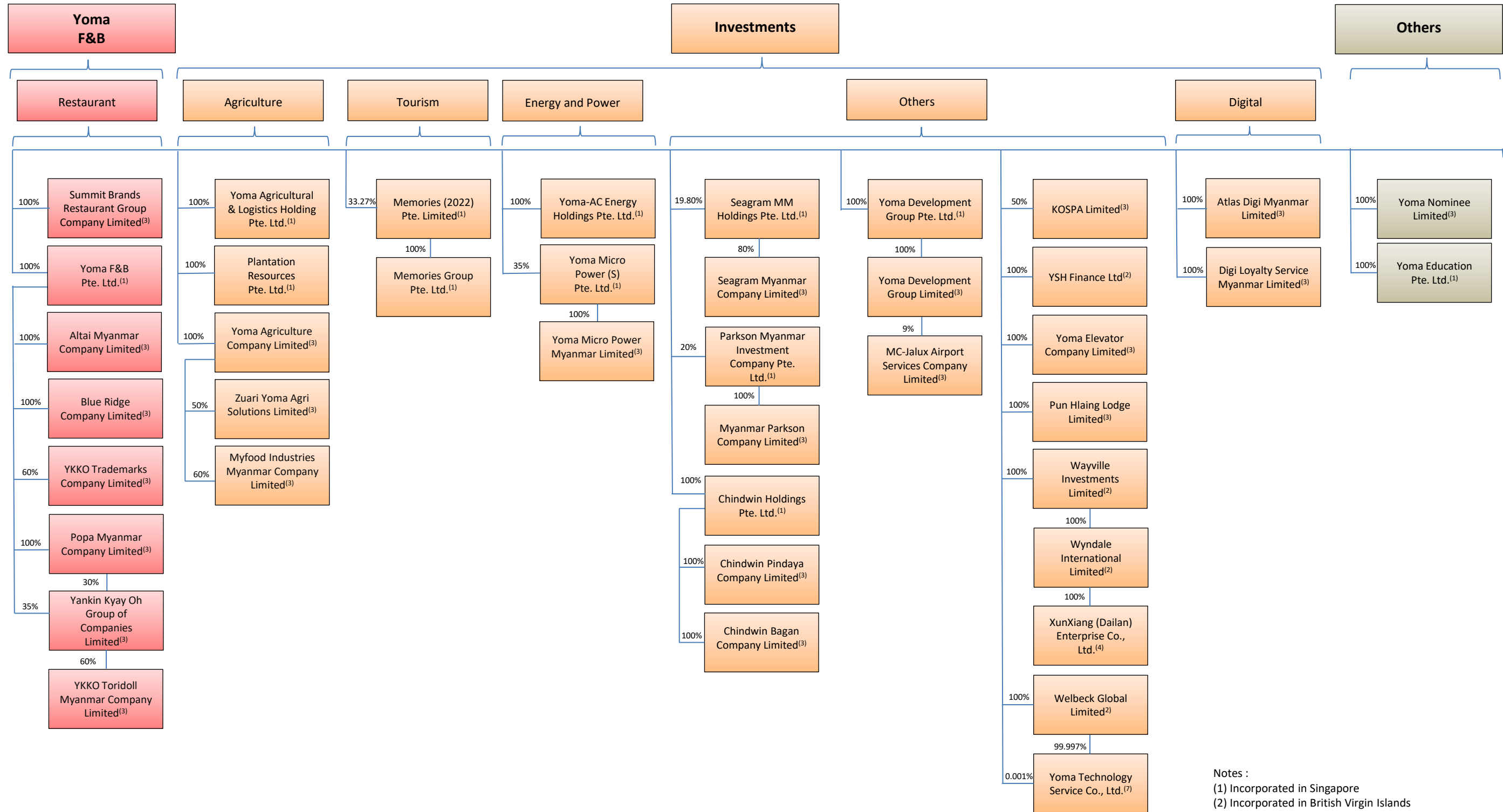
(As at 27 December 2023)



## Yoma Strategic Holdings Ltd.<sup>(1)</sup>

100%

### Yoma Strategic Investments Ltd.<sup>(1)</sup>



**Notes :**

- (1) Incorporated in Singapore
- (2) Incorporated in British Virgin Islands
- (3) Incorporated in Myanmar
- (4) Incorporated in People's Republic of China
- (5) 100% held through Myanmar Motors Pte. Ltd., a wholly-owned subsidiary of Yoma Strategic Investments Ltd.
- (6) Incorporated in Philippines
- (7) Incorporated in Thailand